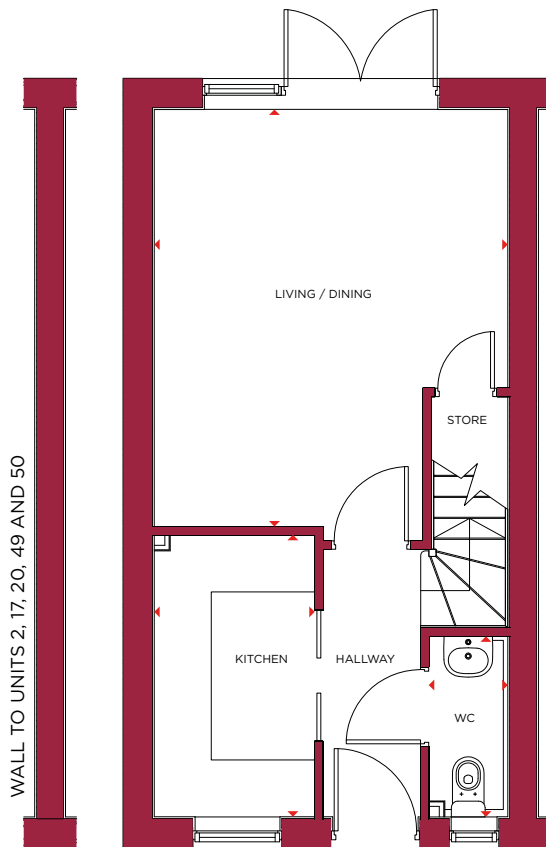




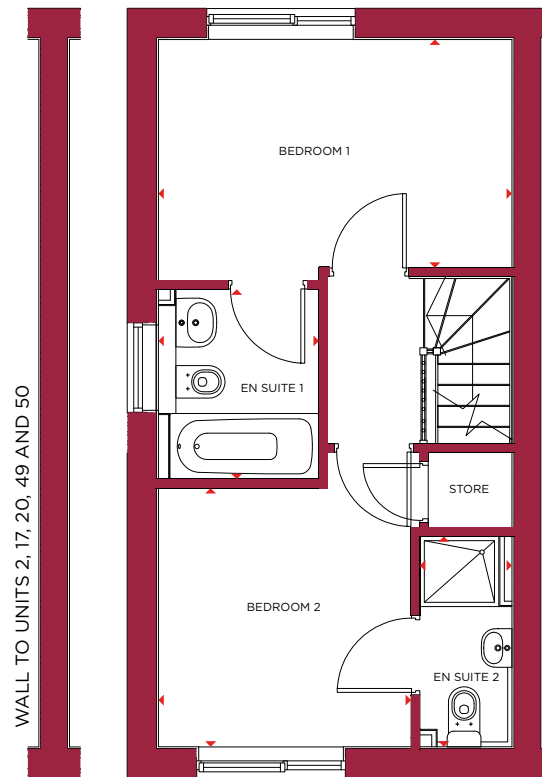
COBHAM

2 BEDROOM HOME (TYPE A)

The Cobham is a spacious two bedroom home with an affordable price tag, perfect for first time buyers and downsizers. The ground floor comprises a light and airy hallway, with a downstairs WC and under stairs storage; a modern integrated kitchen and separate open-plan living/dining area with patio doors which lead out onto the garden. The first floor offers a spacious master bedroom complete with en suite bathroom, a double guest bedroom which also features an en suite, plus ample storage space throughout.



GROUND FLOOR



FIRST FLOOR

Brick colour

Red

Buff

Plot numbers

1, 2, 3, 10, 11, 17, 20,
38, 39, 47, 48

12, 37, 49, 50

Ground floor

Size

WC

6'9" x 2'11"

Living/Dining

15'7" x 13'3"

Kitchen

10'6" x 6'0"

First floor

Size

Bedroom 1

8'6" x 13'3"

En suite 1

7'1" x 6'0"

Bedroom 2

9'8" x 9'5"

En suite 2

7'10" x 3'5"

Overall internal area: 64.96m² (699ft²)