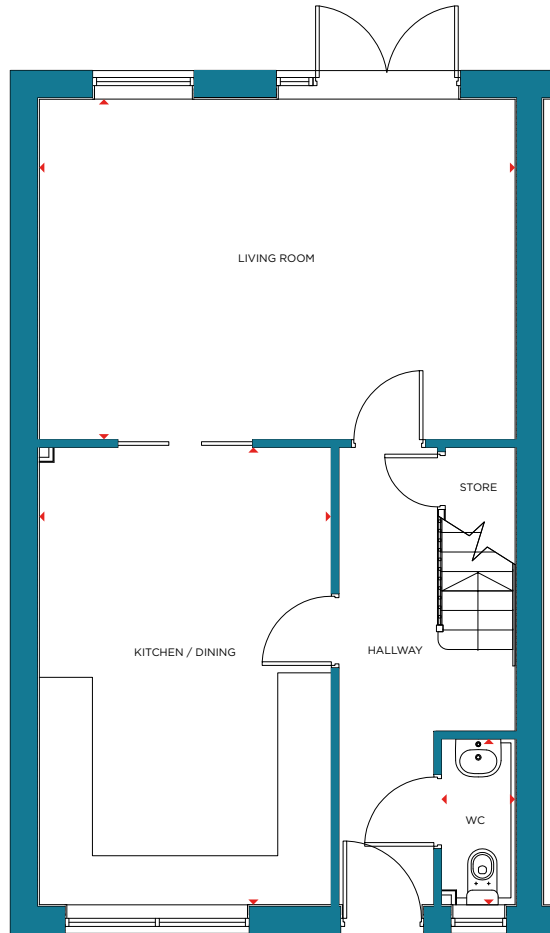




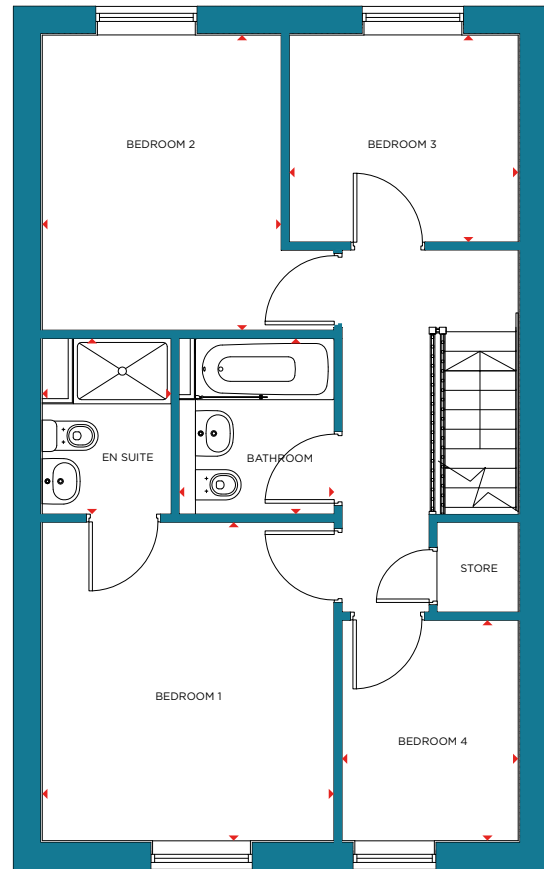
DELAGRANGE

4 BEDROOM HOME (TYPE C)

The Delagrance is the perfect home for those looking to put down long-term roots in a traditional home conceived with contemporary style over two floors. The ground floor features a light, welcoming hallway which leads through to a spacious, fully integrated kitchen/diner to the front of the house and a convenient downstairs WC and storage. The generous living room overlooks the back garden, receiving natural light throughout the day. The first floor features the master bedroom with en suite, as well as a sizeable family bathroom, two double bedrooms and a fourth bedroom which would make the perfect nursery or study - ideally located next to the master bedroom.



GROUND FLOOR



FIRST FLOOR

Brick colour

Plot numbers

Red

8, 29

Buff

9, 18, 19

Ground floor

Size

WC

6'8" x 2'11"

Living Room

13'8" x 19'1"

Kitchen/Dining

18'4" x 11'9"

First floor

Size

Bedroom 1

12'9" x 11'9"

En suite

7'1" x 5'2"

Bedroom 2

11'10" x 9'7"

Bedroom 3

8'4" x 9'2"

Bedroom 4

8'10" x 7'1"

Bathroom

7'1" x 6'3"

Overall internal area: 114.8m² (1235ft²)