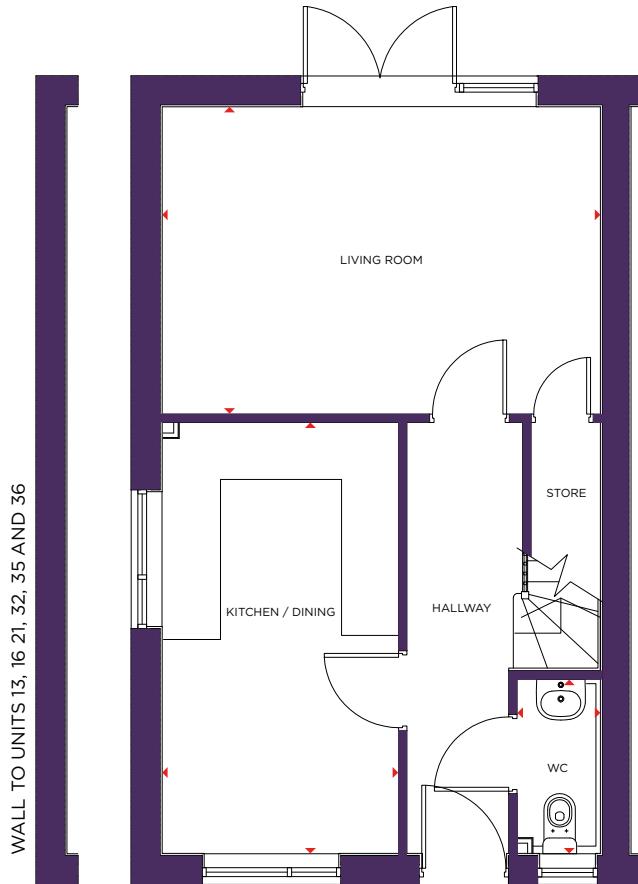




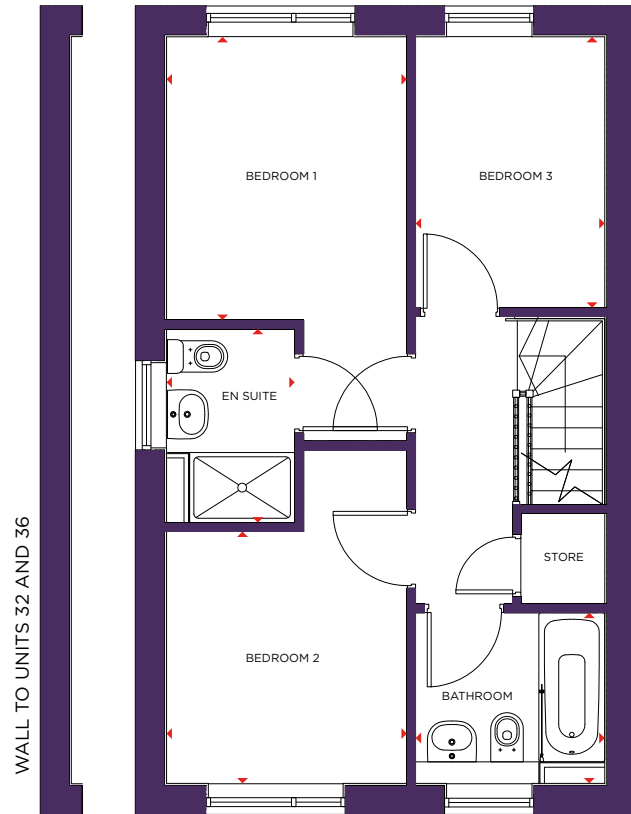
LYSANDER

3 BEDROOM HOME (TYPE B)

A fantastic family home, The Lysander features a spacious, contemporary integrated kitchen/diner – ideal for those who enjoy entertaining, as well as a convenient downstairs WC. The spacious living room is flooded with natural light from patio doors which open out onto the back garden. The first floor offers a master bedroom with en suite, plus a double guest room and third bedroom, storage and a modern, fully-fitted family bathroom.



GROUND FLOOR



FIRST FLOOR

Brick colour

Plot numbers

| | |
|------|-------------------------------|
| Red | 5, 14, 16, 21, 32, 33 |
| Buff | 4, 13, 15, 30, 31, 34, 35, 36 |

Ground floor

Size

| | |
|----------------|---------------|
| WC | 6'6" x 3'1" |
| Living Room | 11'6" x 16'5" |
| Kitchen/Dining | 16'1" x 8'10" |

First floor

Size

| | |
|-----------|--------------|
| Bedroom 1 | 10'7" x 9'0" |
| En suite | 7'3" x 4'10" |
| Bedroom 2 | 9'5" x 9'0" |
| Bedroom 3 | 10'2" x 7'1" |
| Bathroom | 6'5" x 7'1" |

Overall internal area: 85m² (914ft²)