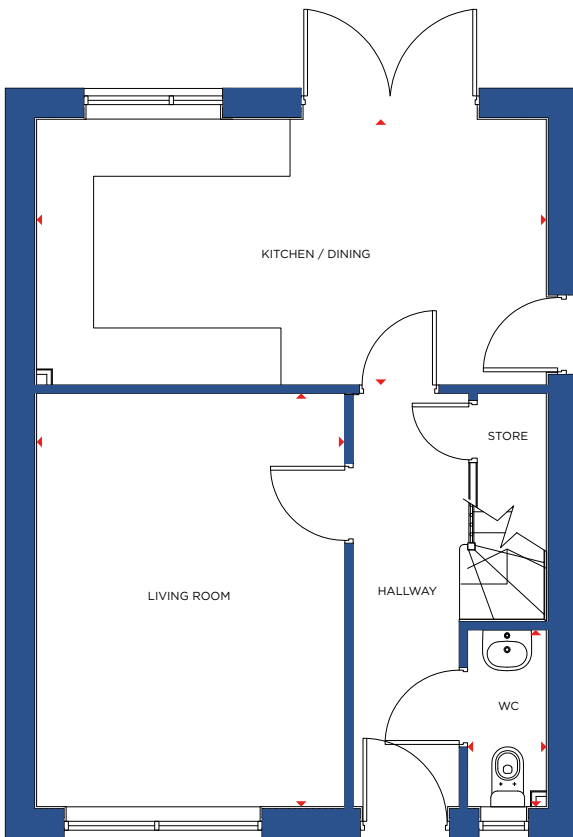




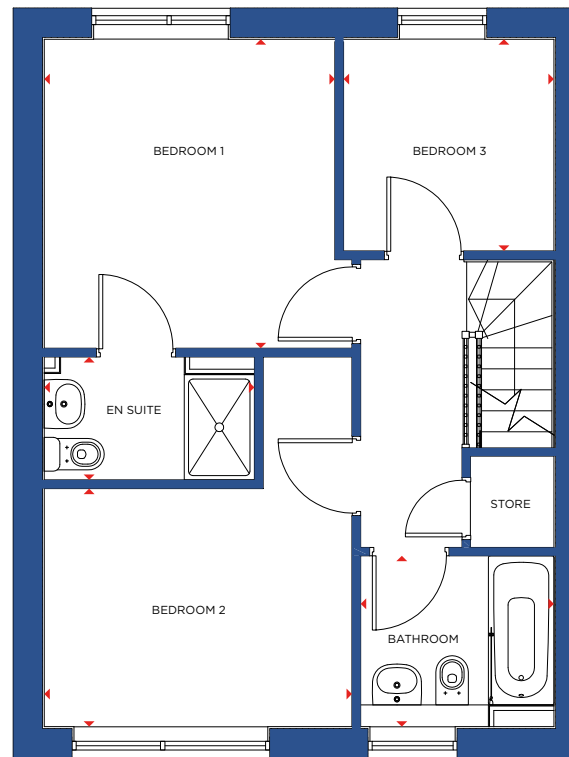
WELLINGTON

3 BEDROOM HOME (TYPE D)

The Wellington is a traditional three bedroom home offering a large living room to the front of the house as well as a downstairs WC and under stair storage. A spacious, contemporary, fully-integrated kitchen/diner runs the full length of the back of the home, with patio doors opening out onto the back garden - offering plenty of space both inside and out for entertaining family and friends. The first floor houses a double master bedroom with en suite; a double guest bedroom and a third bedroom ideal as a nursery or study. The first floor also features a well-proportioned, contemporary bathroom and ample storage throughout.



GROUND FLOOR



FIRST FLOOR

Brick colour Plot numbers

Red	6
Buff	7

Ground floor Size

WC	6'7" x 2'11"
Kitchen/Dining	9'11" x 19'1"
Living Room	15'6" x 11'6"

First floor Size

Bedroom 1	11'7" x 10'10"
En suite	4'7" x 7'10"
Bedroom 2	8'11" x 11'6"
Bedroom 3	7'11" x 7'10"
Bathroom	6'5" x 7'3"

Overall internal area: 91m² (979ft²)